

# [24]7 Active Share™ Product Insights

[24]7 Active Share™ enables voice agents to share personalized, interactive content during a live call, so customers make faster, better-informed decisions.

We regularly review our products' activity and performance trends. Change the Conversation.

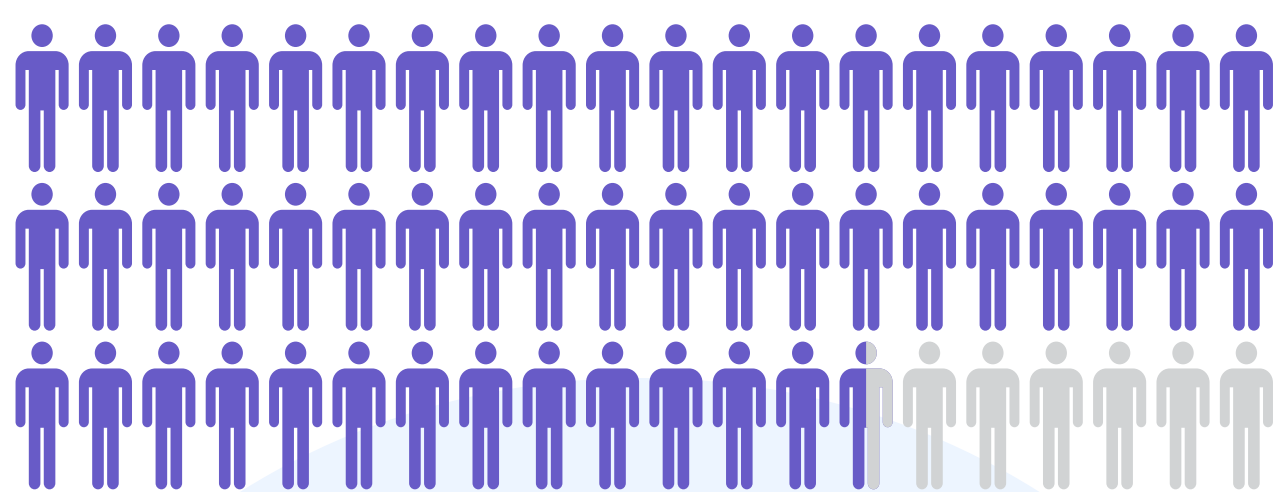


## 639,226 FIRST YEAR TOTAL SESSIONS

[24]7 Active Share clients engage their customers with Active Cards so often, one wonders what they did before.

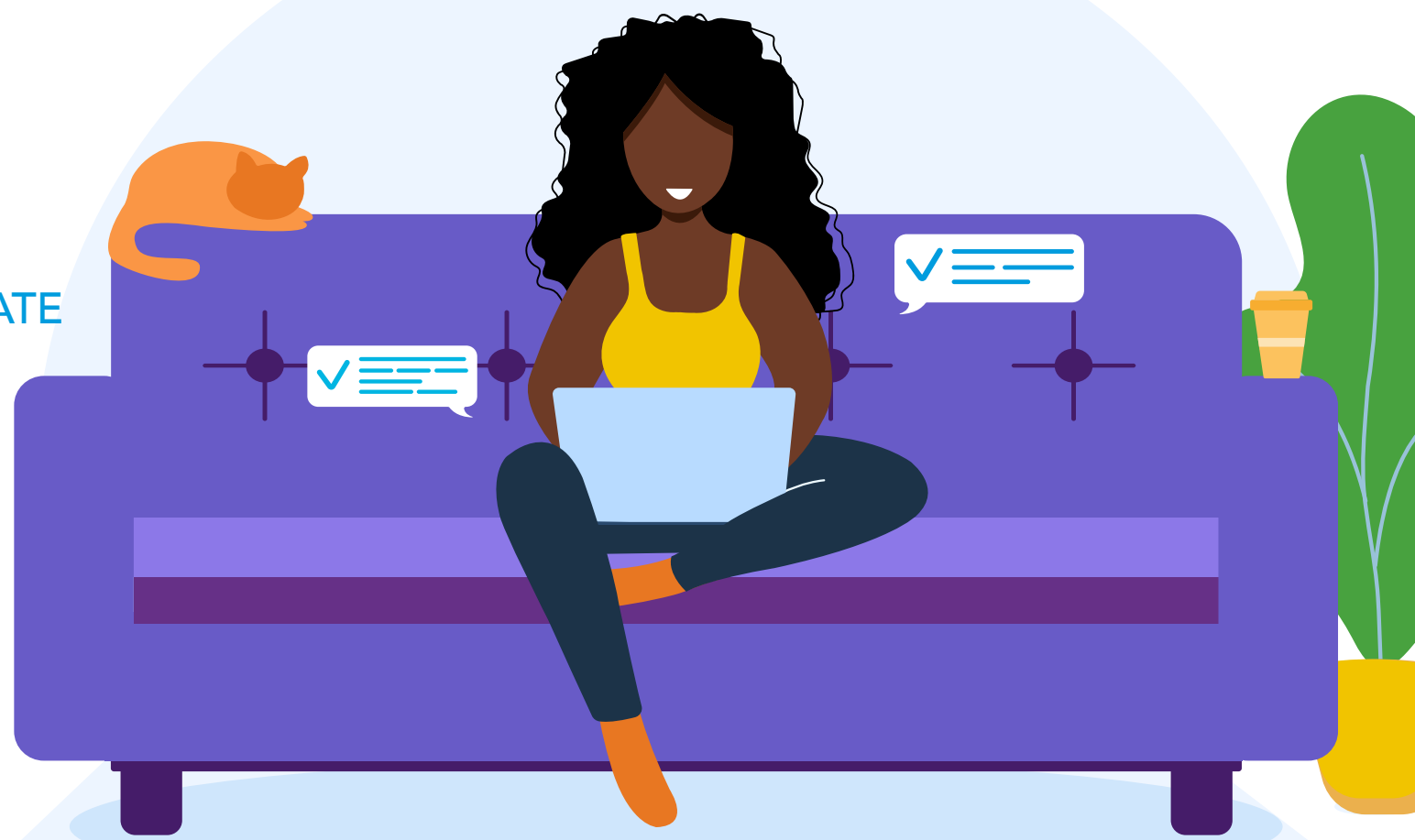
## 89% CUSTOMER ACCEPTANCE RATE

Customers do not shy away from this new technology, accepting nearly 90% of 720,849 agent invitations.



## 77% SESSION CO-BROWSING RATE

Customers interact with Active Cards in most sessions, equipping agents to better facilitate the buying journey.

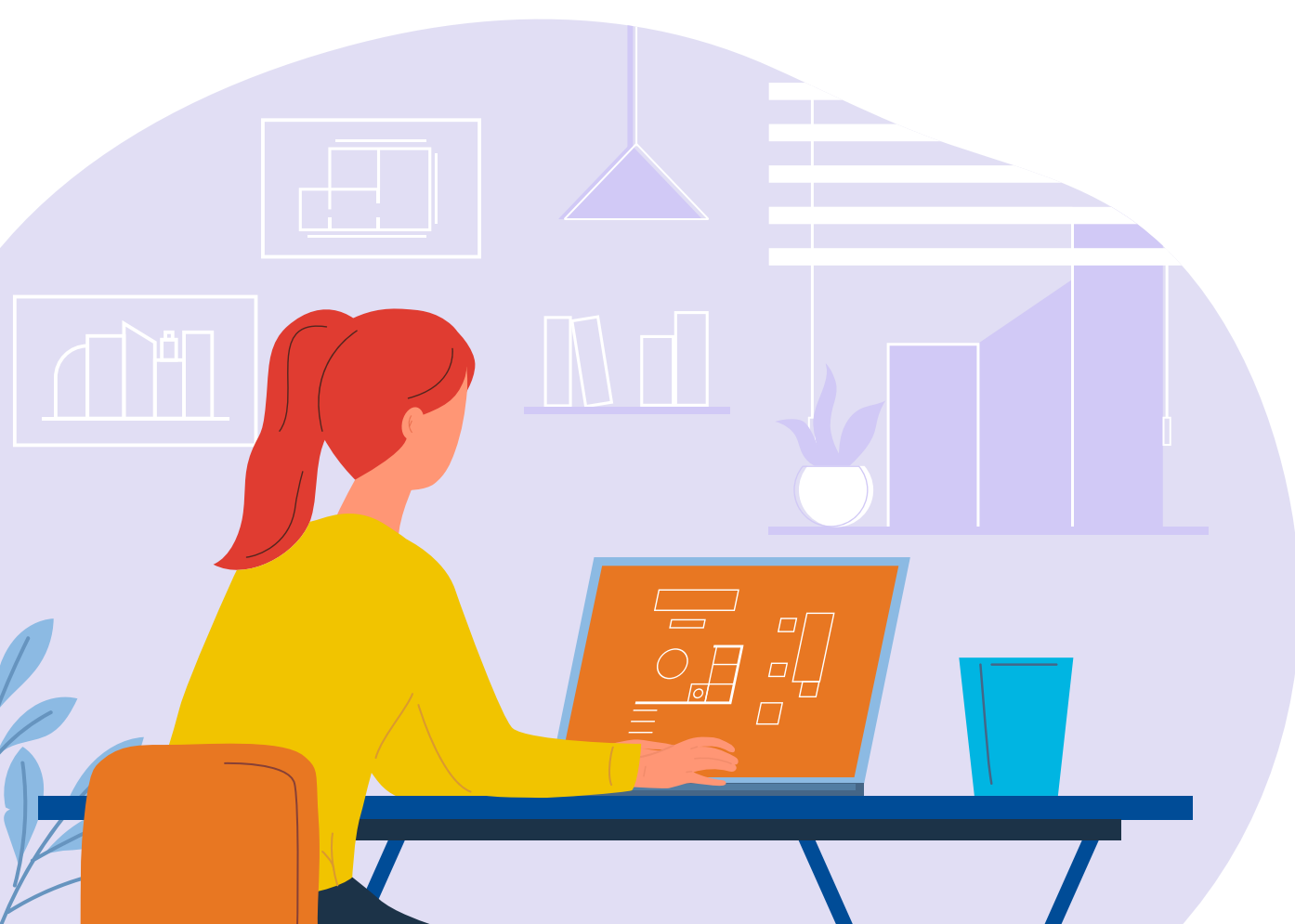


## 34 DIFFERENT CARDS (SO FAR!)

We custom-build Active Cards for our clients' specific and evolving needs.

## 0 REQUIRED ADD-INS, PLUGINS, APPS

[24]7 Active Share works natively on web browsers without modifying existing voice infrastructure.



### Contact us

[www.247.ai](http://www.247.ai)  
[info@247.ai](mailto:info@247.ai)  
United States +1-855-692-9247  
Canada +1-866-273-1195  
United Kingdom +44 0 207 836 9203  
Australia +61 2 90025780

### About [24]7.ai

[24]7.ai is redefining how artificial intelligence, human insight, and deep vertical expertise can produce personalized, satisfying customer experiences across all channels. Our advanced conversational AI platform predicts consumer intent and creates frictionless interactions that help the world's largest and most recognizable brands to strengthen customer relationships and increase brand loyalty. With more than two decades of contact center operations expertise, [24]7.ai empowers companies to deliver natural, consistent conversations that increase customer satisfaction while lowering costs.

For more information visit: [www.247.ai](http://www.247.ai)